



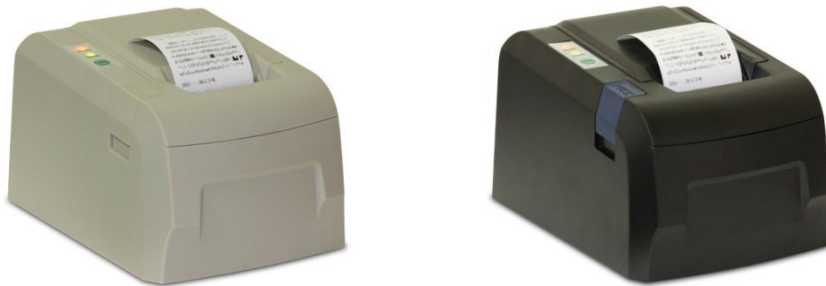
Features

- 3 Types of Interface available to meet Various Applications
- Low Cost, High Speed & Low Noise Thermal Printing
- Easy Paper Loading and changing
- Paper End Sensors
- Support Graphics and Barcode Printing
- Versatile and Adaptable
- Supports Windows 98 / 2000 / NT / XP / Vista / 7 / 8 / 10



Option

- WM-EP Wireless Communication Module for SP-POS58IV-S



Versatility and Functionality are always Built-in

SP-POS58IV Series Economical Thermal Printers

Specifications

Model		SP-POS58IV-S	SP-POS58IV-P	SP-POS58IV-U
Interface Type		RS-232	LPT	USB
Print	Printing Method	Thermal Line		
	Printing Speed	70mm / second or 20 lines / second		
	Resolution	8 dots/mm, 384 dots/line		
	Printing Width	48mm		
Character	Character Set	IBM Character Set II, GB2312-80		
	Print Font	ANK: 9 x 17 / 12 x 24; GB2312-80: 24 x 24		
	Character per Line	32		
Paper Spec	Paper Type	Thermal Paper		
	Paper Width	57.5± 0.5mm		
	Paper Roll Diameter	Max: 83.0mm		
	Roll Core Inner Dia.	13mm minimum		
	Paper Thickness	0.06 to 0.07mm		
Reliability	MCBF	5 million lines		
	TPH	100km		
	Auto Cutter	Not Applicable		
Barcode Types		UPC-A,UPC-C, EAN-13, EAN-8, CODE39, ITF, CODEBAR, CODE93, CODE128		
Emulation		ESC/POS		
Paper Supply Method		Drop-in Paper Load		
Driver		Windows 98 / 2000 / NT / XP/ Vista / 7		
Sensor		Paper End Sensor		
Drawer Port		1 Port		
Auto Cutter		N/A		
Housing Color		Beige / Black		
Power Supply (Adapter)		AC100 ~240V ± 10%(included) DC 12V, 2A+		
Net / Gross Weight		1.0kg / 1.7kg		
Printer Dimension		200 x 138 x 120 mm (W x L x H)		
Operation Environment		0 ~ 50° C , R.H. 10~80%		
Storage Environment		-20 ~ 60° C , R.H. 10~90%		

In the interest of improvement, specifications may change prior to notice



Fidelity Measurement Company Limited

www.fm.com.tw

info@fm.com.tw

REV.: SPPOS58IV/26/05/04